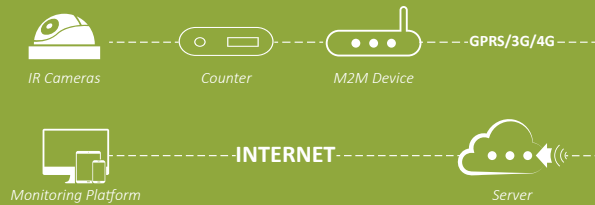


# Passenger Counting System



Meitrack independently develops a passenger counting system to count the number of passengers that get on and get off buses. Under standard environments, the system can reach a high rate of accuracy. More importantly, managers can get counting reports from Meitrack MS03 tracking platform. This is an effective way to determine passenger load for the purpose of adjusting driving routes and operating time to prevent overloading of the vehicles, and thus reduce operating costs.



High precision passenger counter



Easy to install



Infrared night vision cameras

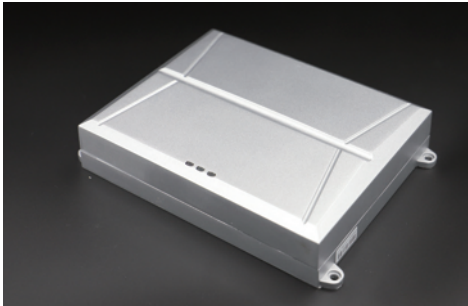


Various applications like buses, tourist attractions, shopping malls, etc.



**Tel:** +86(755)83462818  
**Web:** [www.meitrack.com](http://www.meitrack.com)  
**Email:** [info@meitrack.com](mailto:info@meitrack.com)  
**Add:** 5/F, International Internet Finance Pioneer Park, No. 1, Taohua Rd., Futian Free Trade Zone, Shenzhen, China. 518038

## A91 Specifications



Item	Description
Passenger counter weight	600g
Passenger counter dimension	200.3 mm x 146.5 mm x 41.3 mm
Passenger counter voltage	9–36 V DC (recommended: 24 V)
Passenger counter current	300 mA
Passenger counter power	7.56 W (input voltage: 24 V)
Camera dimension	38 mm x 38 mm
Camera voltage	12 V
Camera current	40 mA (day); 140 mA (night)
Camera power	0.84 W (day); 3.24 W (night)
Operating temperature	-40°C to 85°C
Operating humidity	0%–95%
Baud rate	115200 bps
Passenger flow speed	< 10 m/s (If the speed is lower than 2 m/s, the accuracy is higher.)
Counting accuracy	92%



## MS03 People Counter Report

Total Inside The Car	Front Door		Rear Door		Total Thru Front Door		Total Thru Rear Door	
	Up	Down	Up	Down	Up	Down	Up	Down
0	0	0	0	0	0	0	0	0
0	3	4	2	1	3	4	2	1
6	5	1	5	3	8	5	7	4
6	1	3	3	1	9	8	10	5
6	3	2	1	2	12	10	11	7
4	4	6	3	3	16	16	14	10
7	6	4	5	4	22	20	19	14
17	10	3	5	2	32	23	24	16
24	12	7	8	6	42	30	32	22
17	3	4	3	9	47	34	35	31
14	5	1	1	8	52	35	36	39
0	2	10	3	9	54	45	39	48

